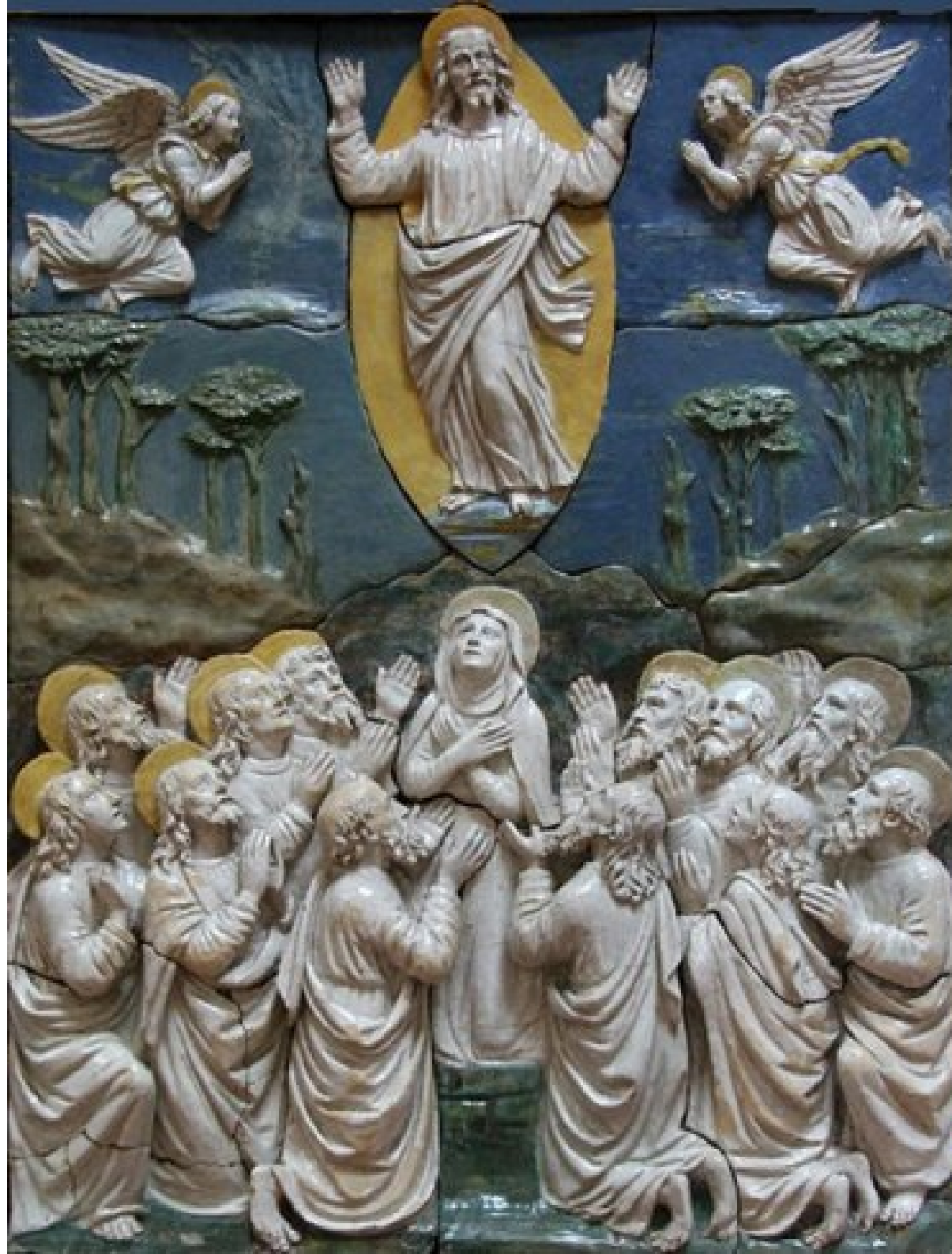




L'ascension du Christ par anonyme - musée de Chicago
(huile sur bois 15eme s.)



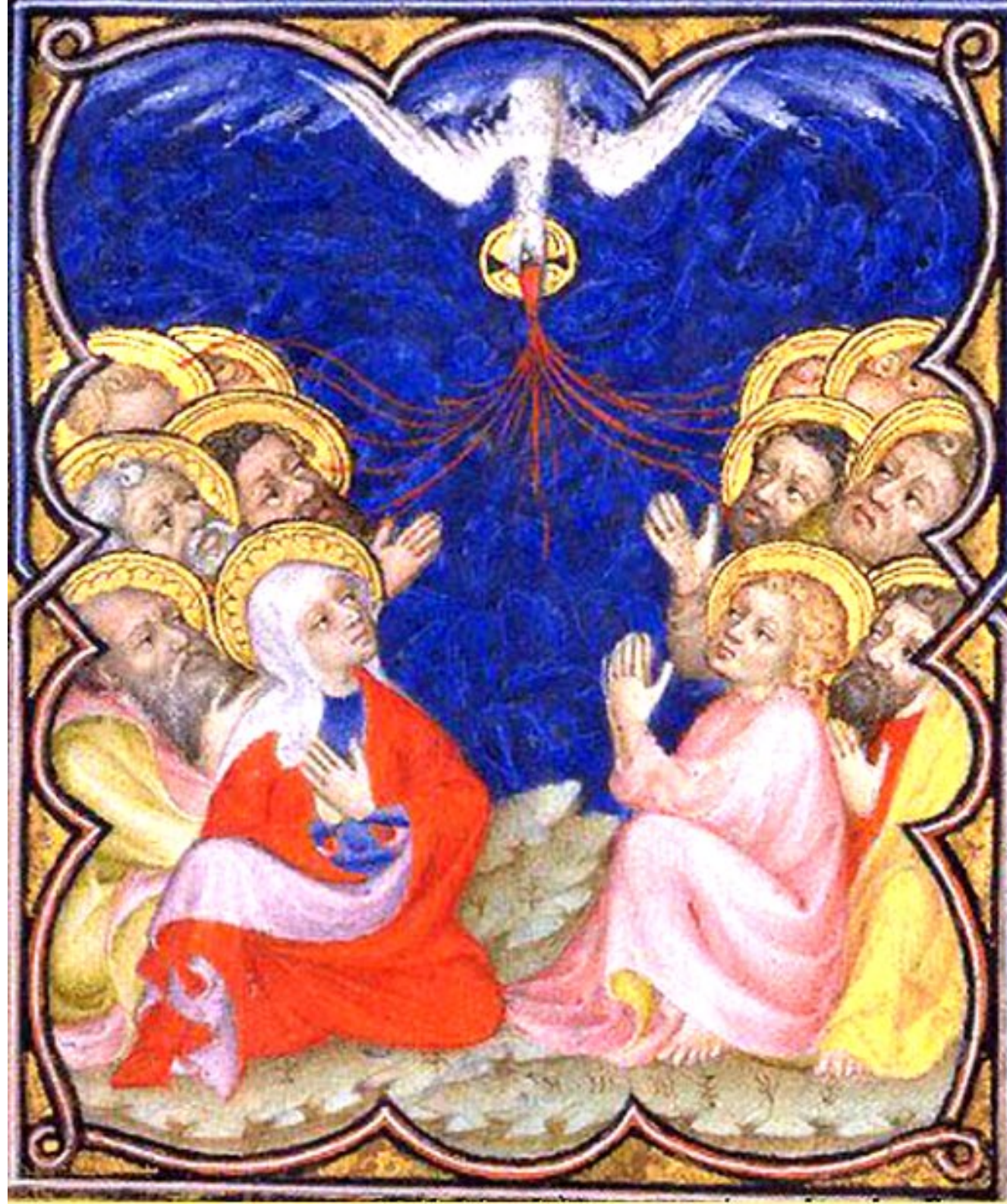
L'Ascension du Christ par Garofalo - galerie nationale d'art antique à Rome



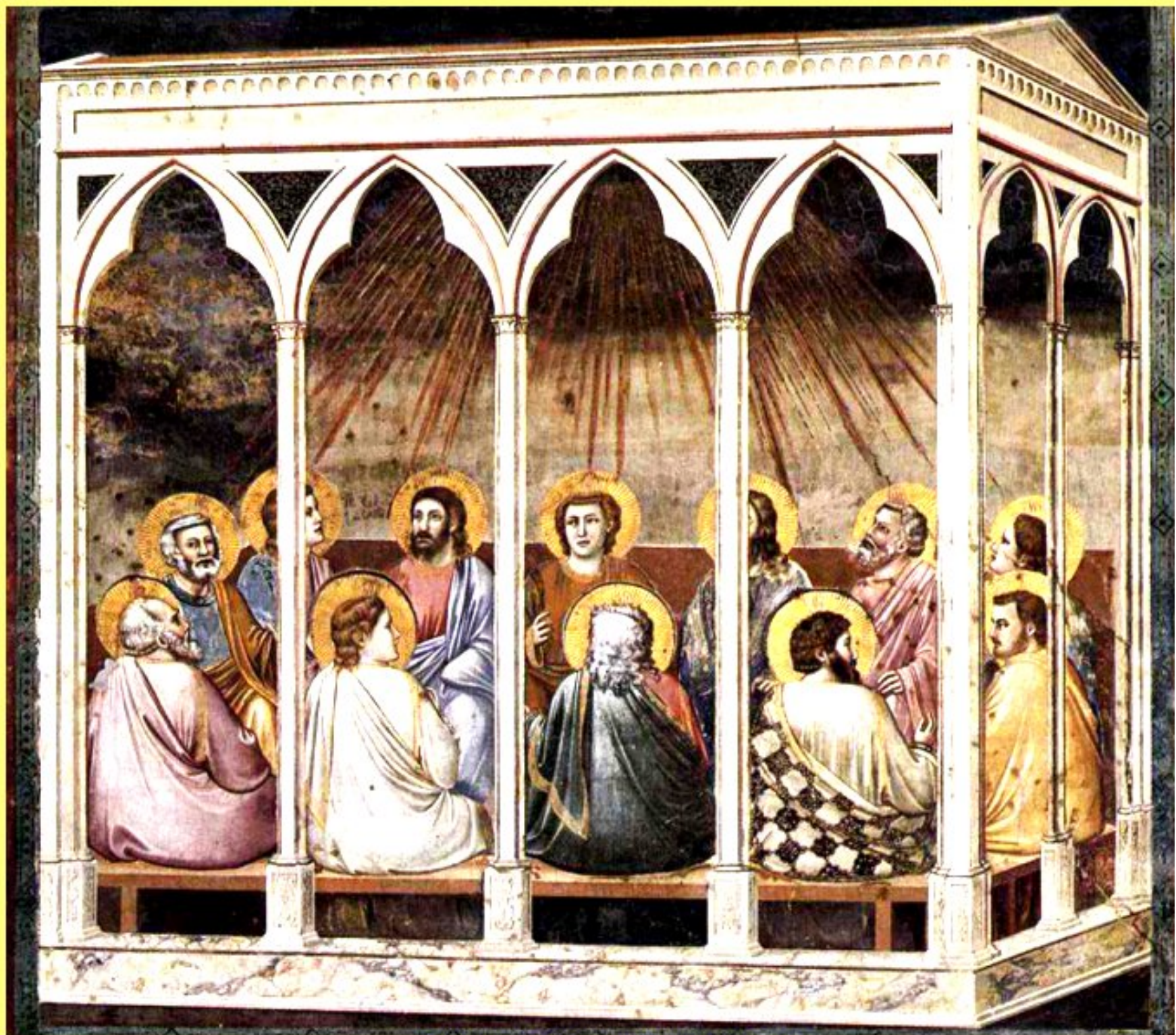
**L'Ascension du Christ
par dellaRobbia
Musée du Bargello
Florence**



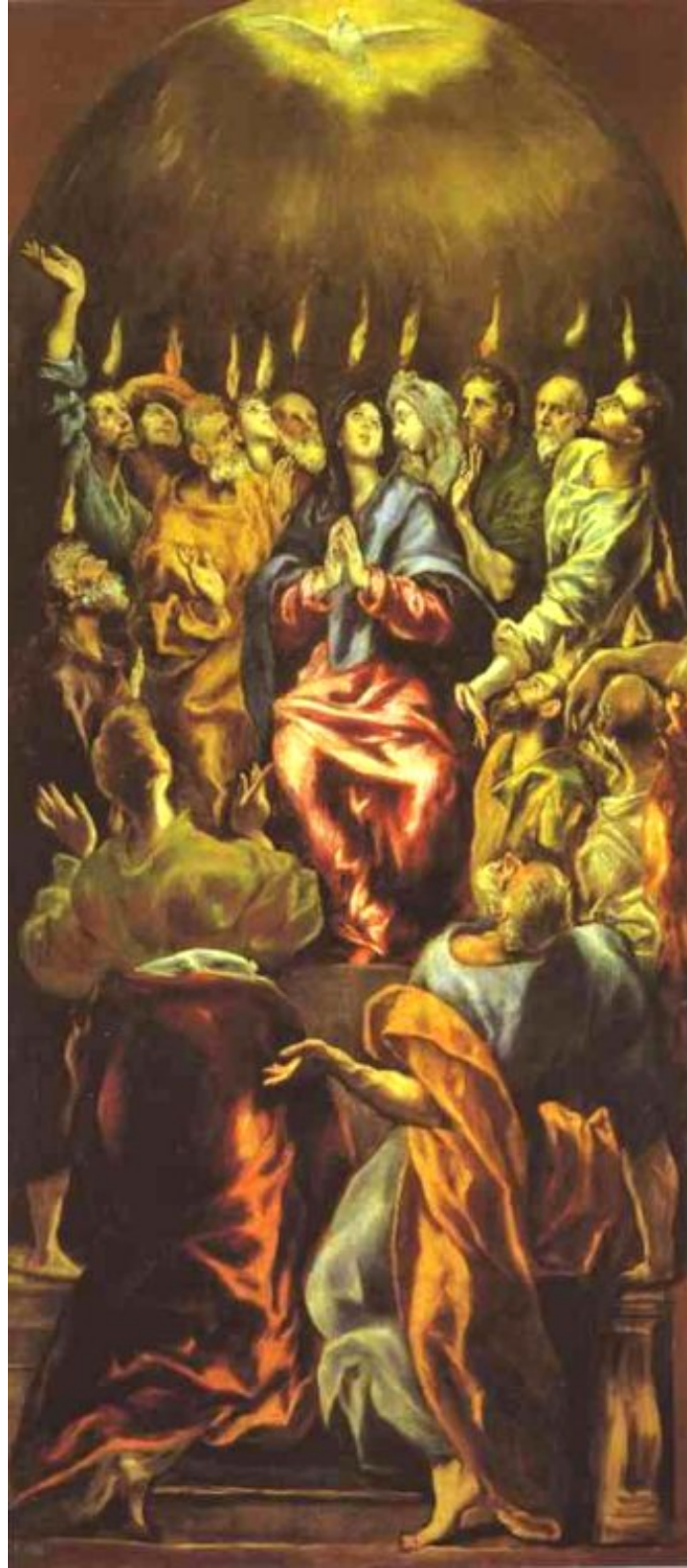
L'Ascension du Christ par Giotto - musée de Padoue



Pentecôte - enluminure
(auteur anonyme)



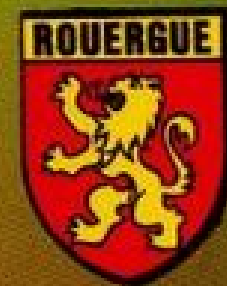
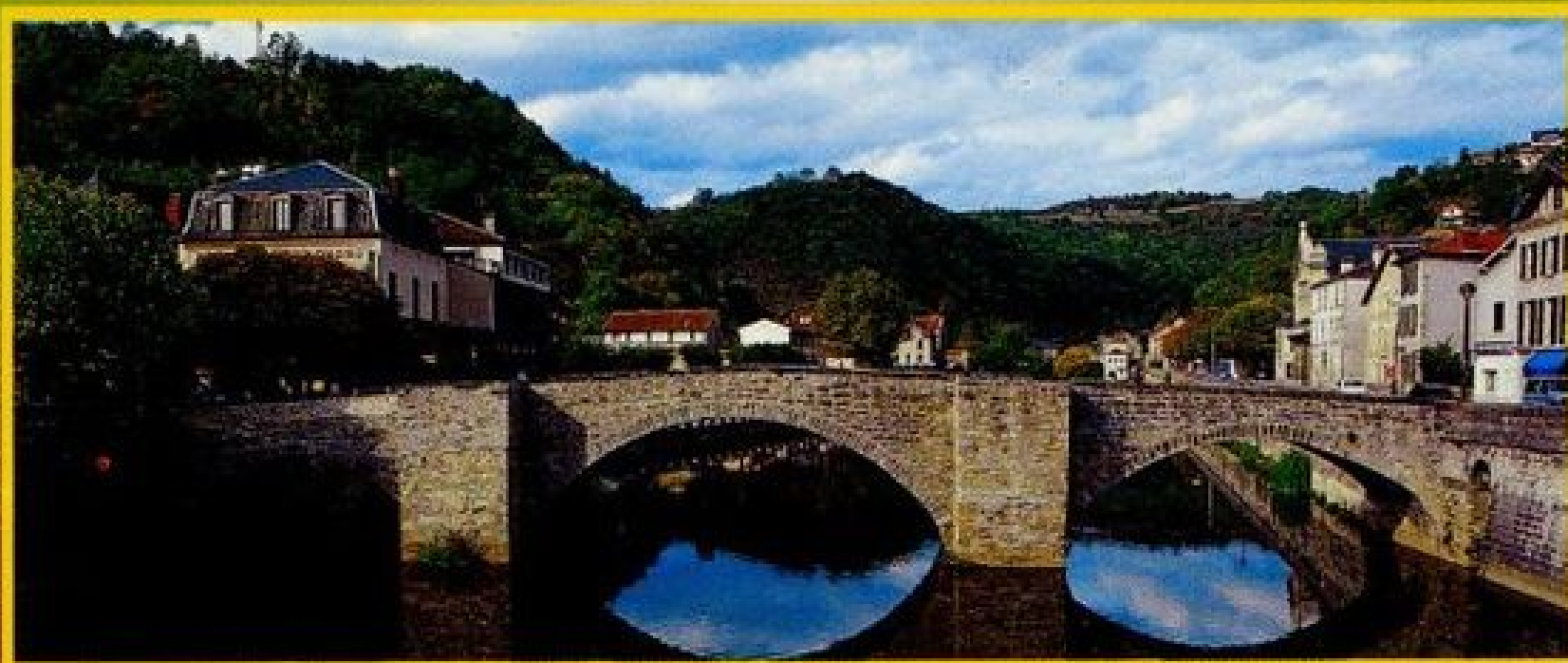
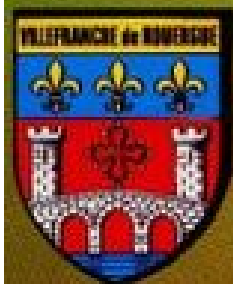
Pentecôte de Giotto - Musée de Padoue



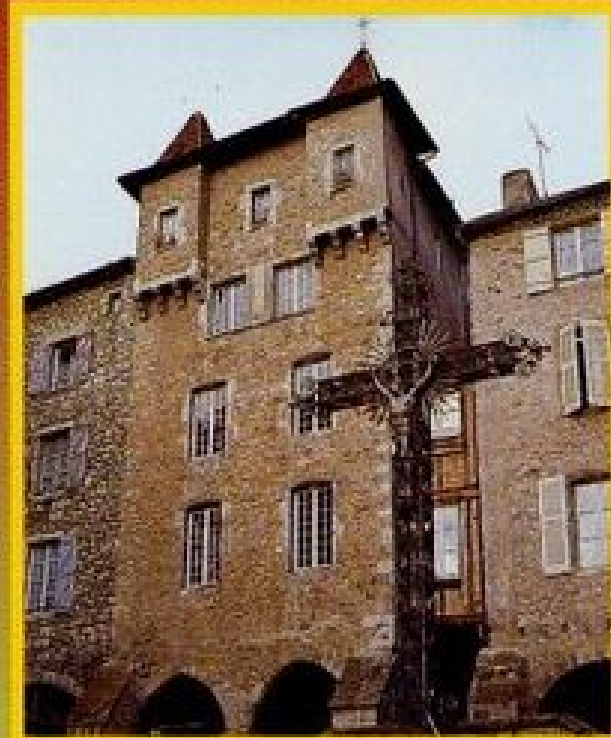
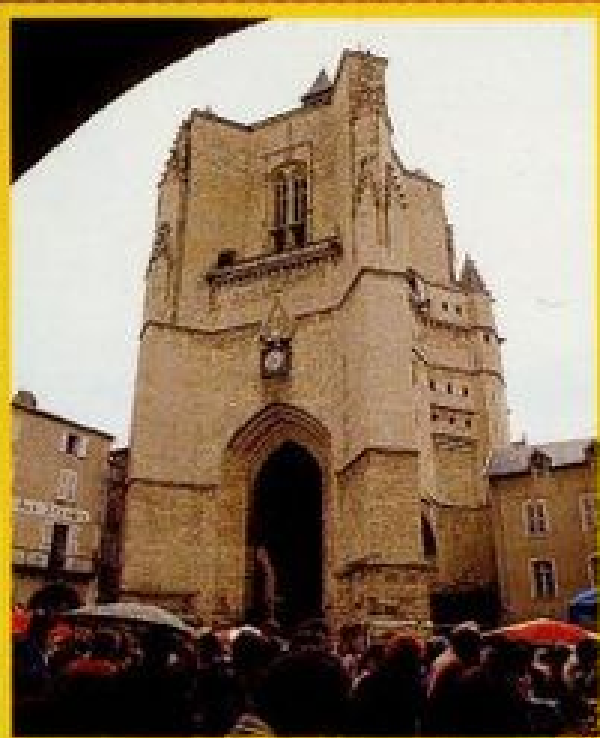
El Greco:
Pentecôte
musée du Prado
à Madrid



Pentecôte par Anton-Raphael Mengs
musée de l' Ermitage à St-Petersbourg Russie

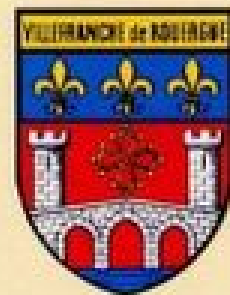
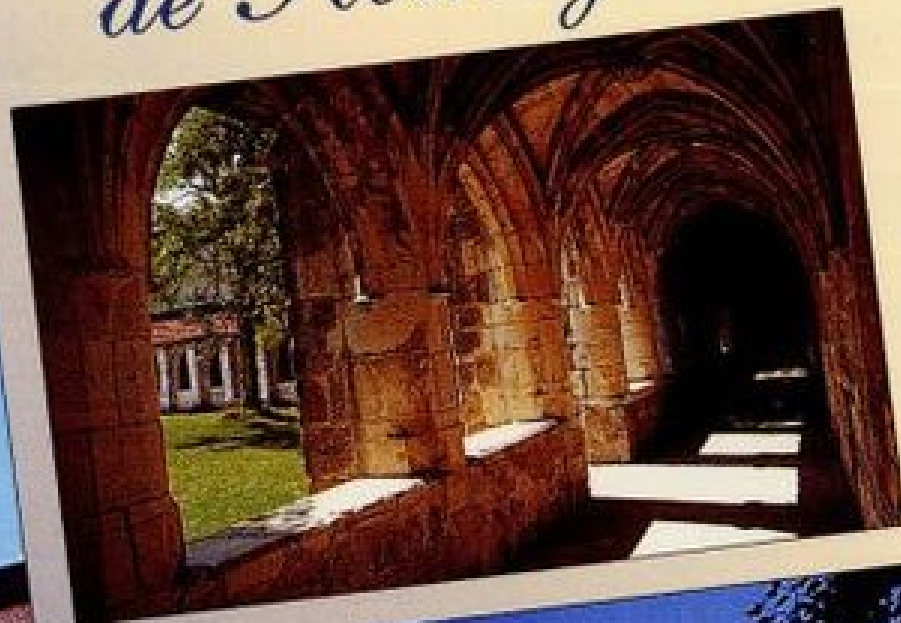
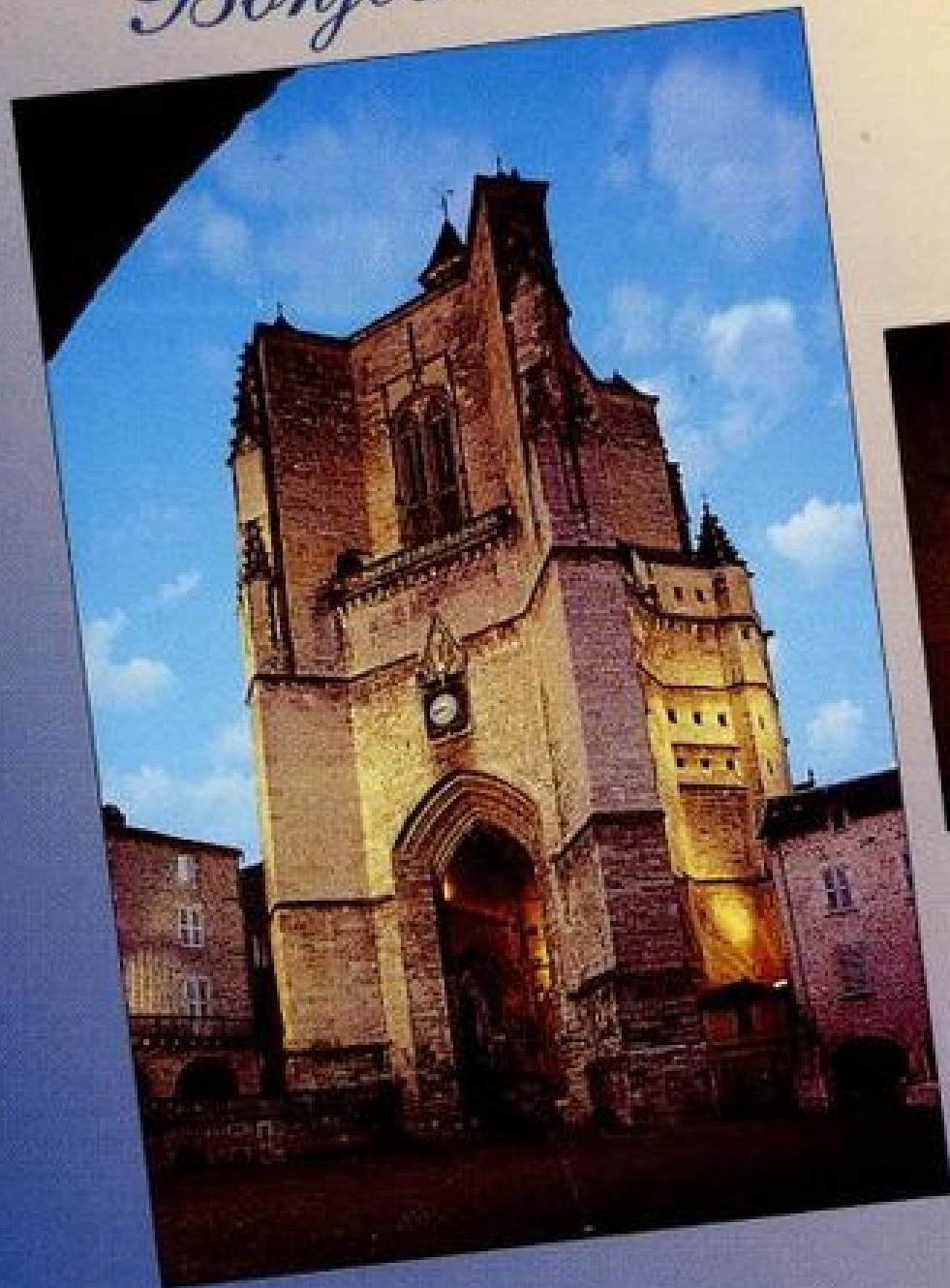


VILLEFRANCHE de ROUERQUE

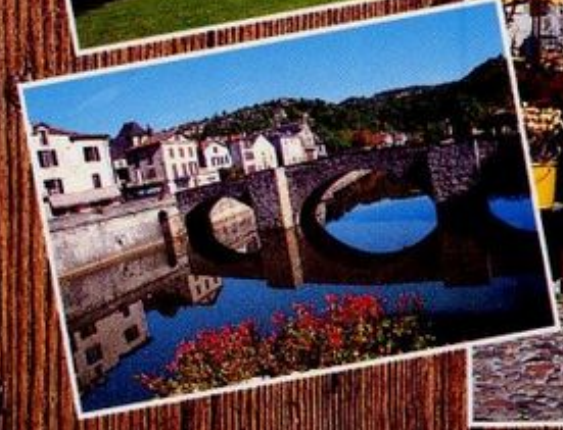


Bonjour de

Villefranche
de Rouergue



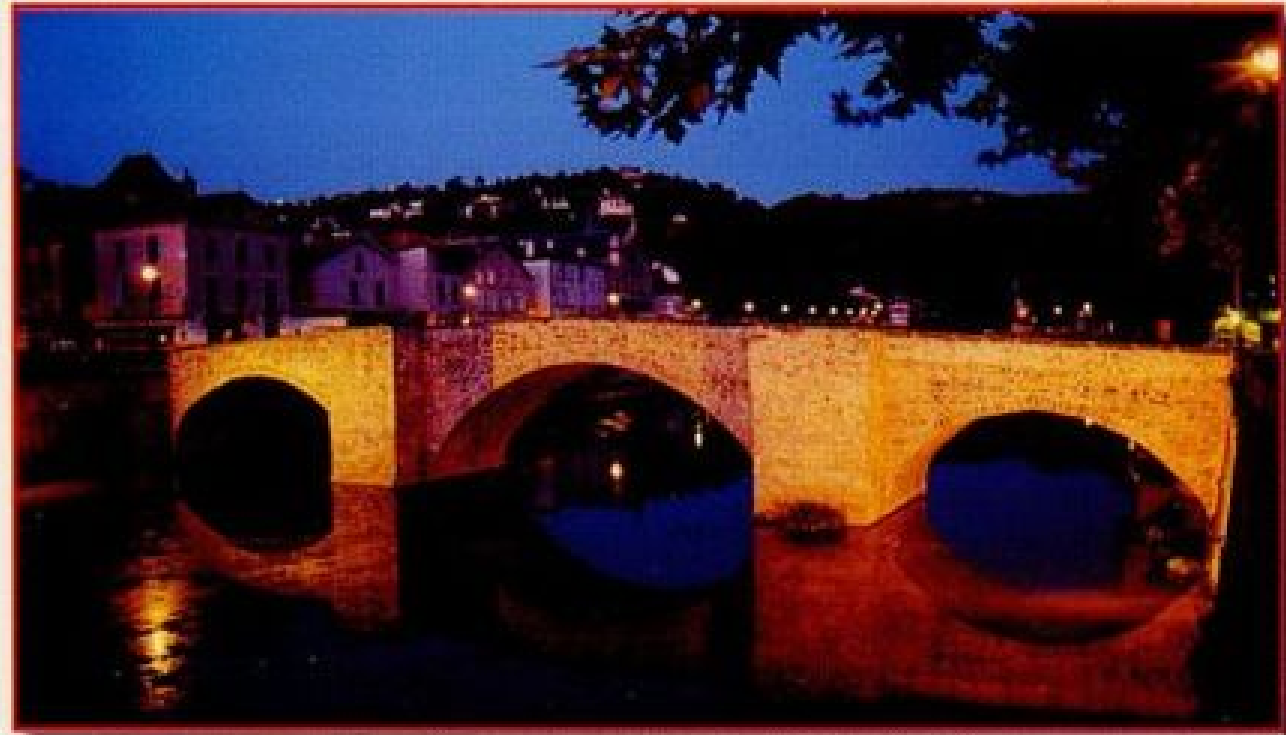
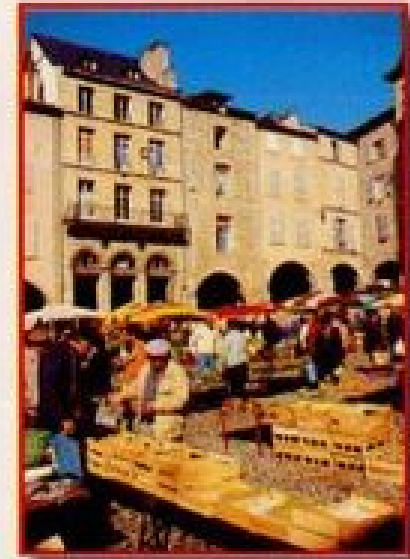
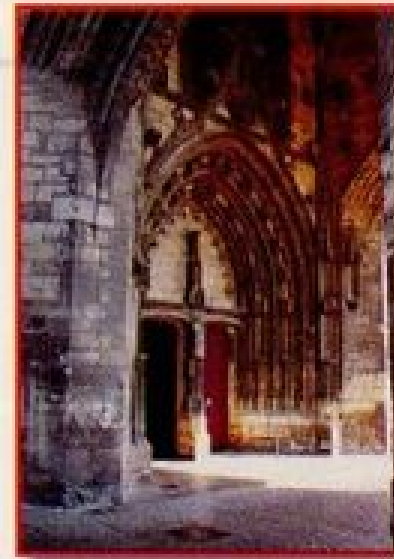
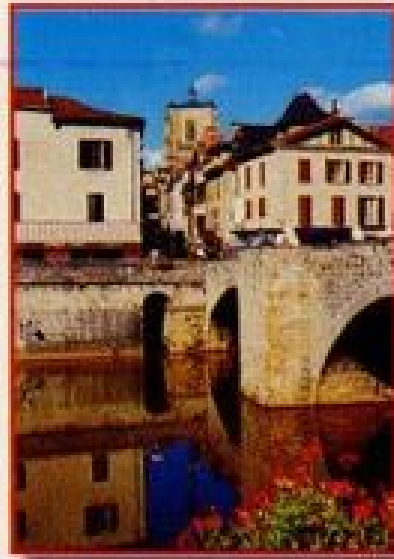
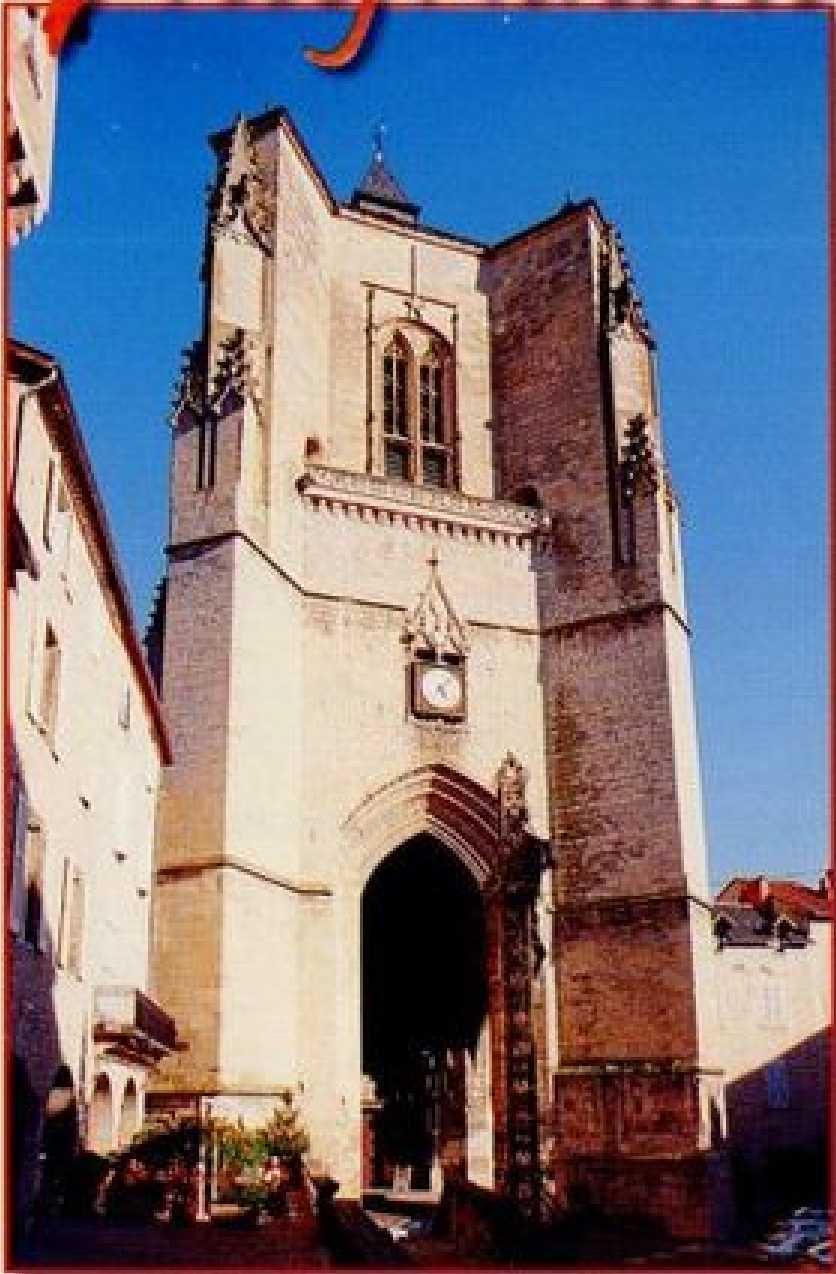
Souvenir de
VILLEFRANCHE
de **ROUERGUE**





Villefranche de Rouergue - place Notre-Dame

Villefranche

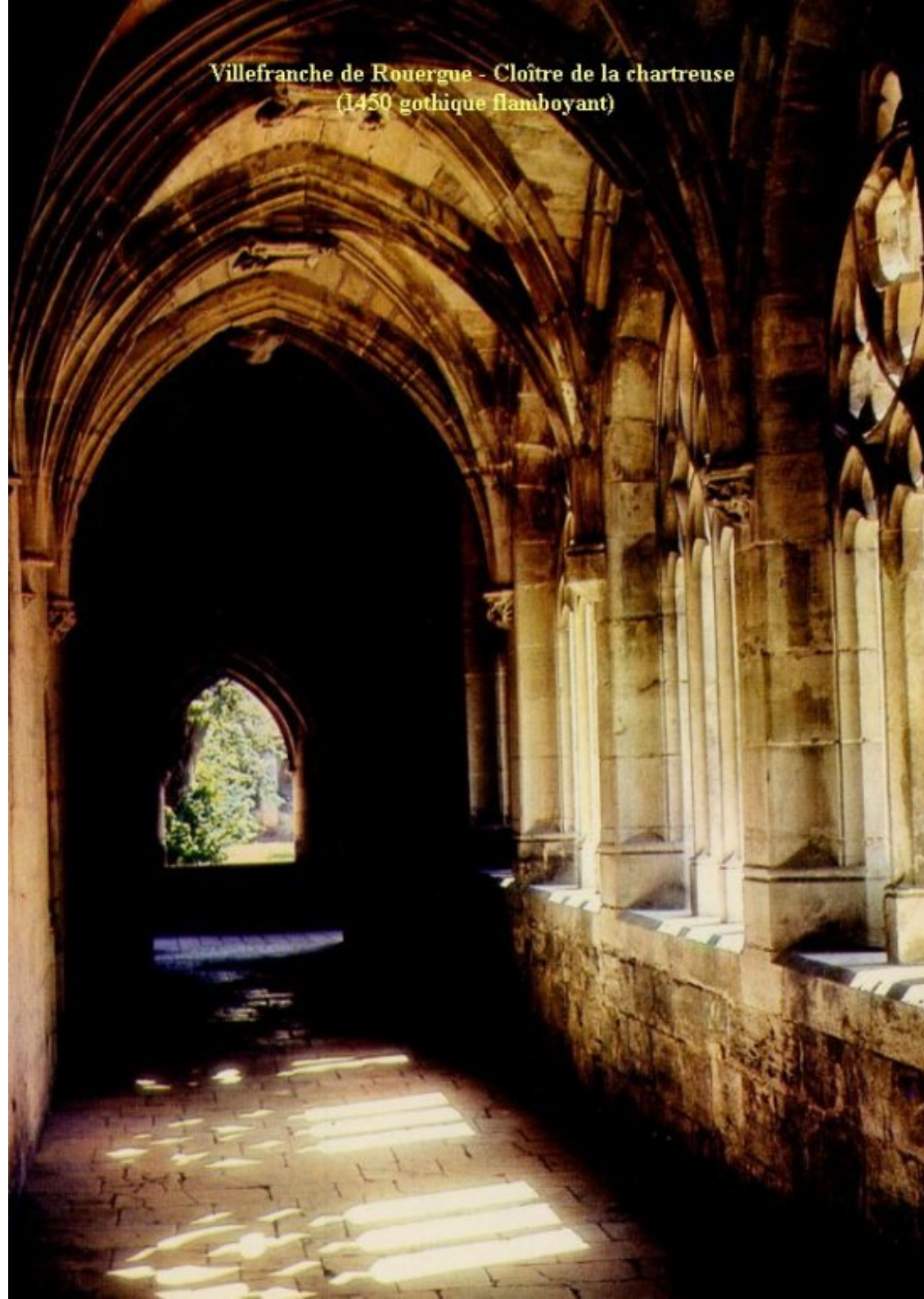


Bastide Royale



VILLEFRANCHE DE ROUERGUE

Villefranche de Rouergue - Cloître de la chartreuse
(1450 gothique flamboyant)





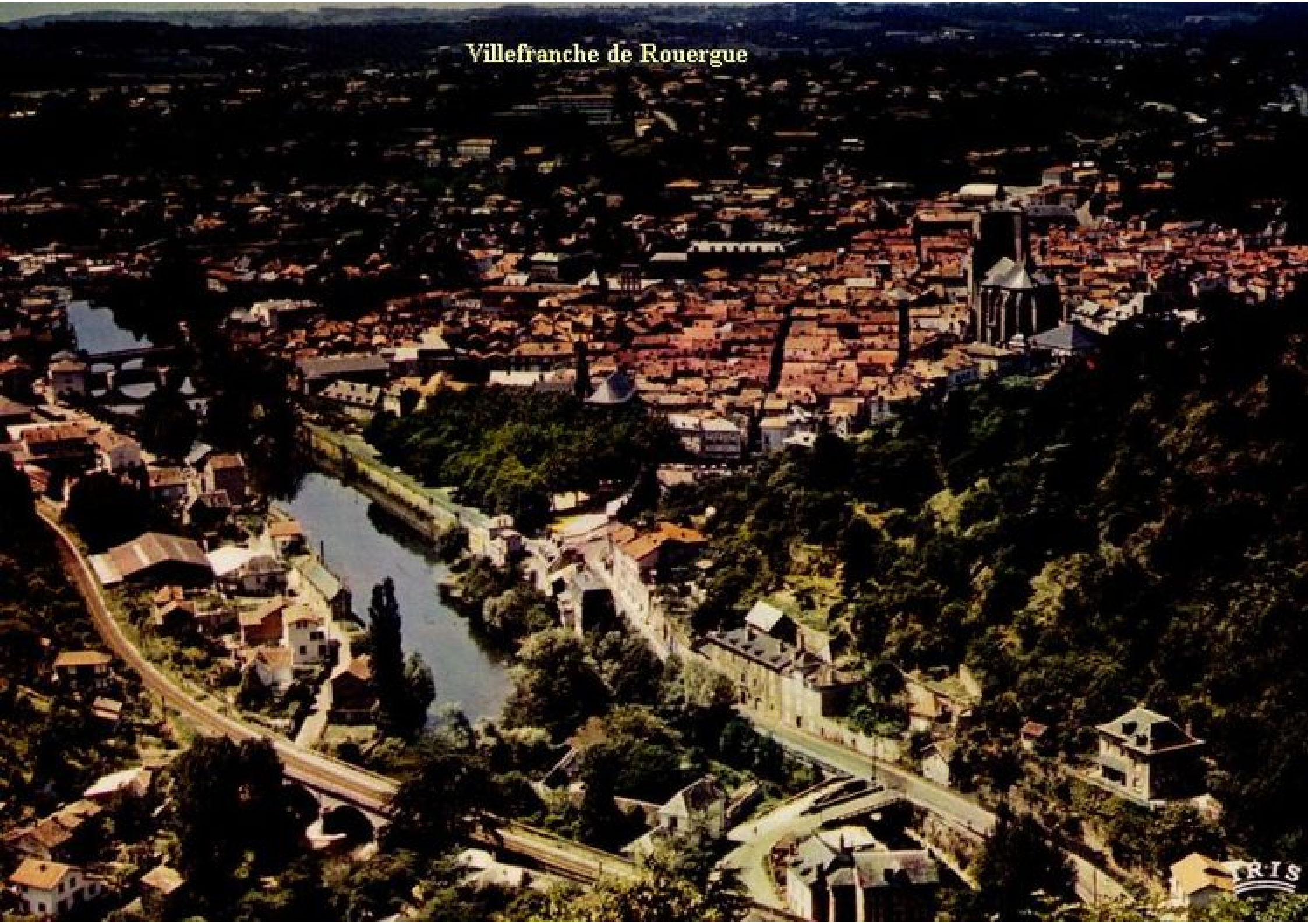
Villefranche de Rouergue - Chapelle des Pénitents Noirs (XVIIeme siècle)

IRIS

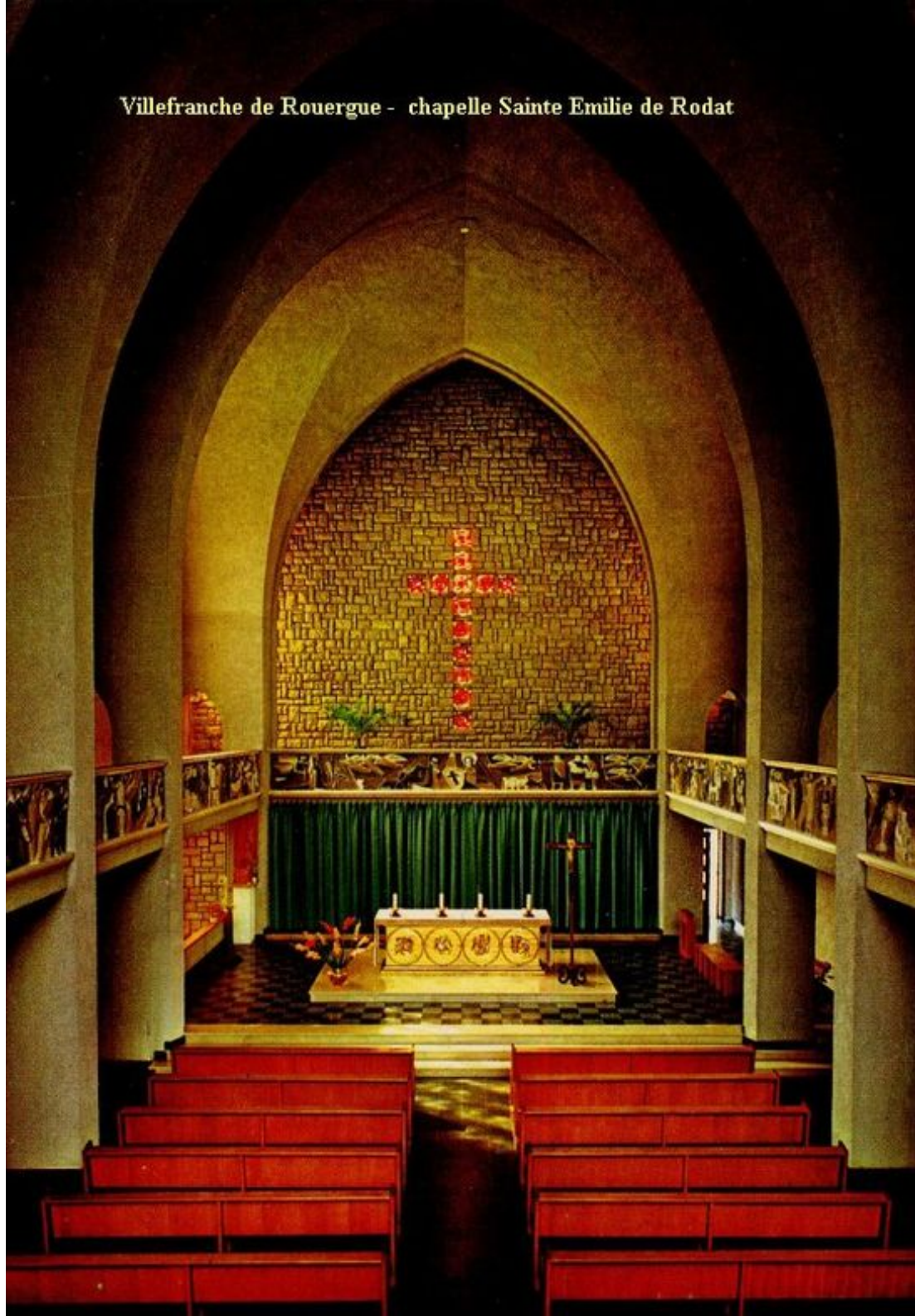
Villefranche de Rouergue

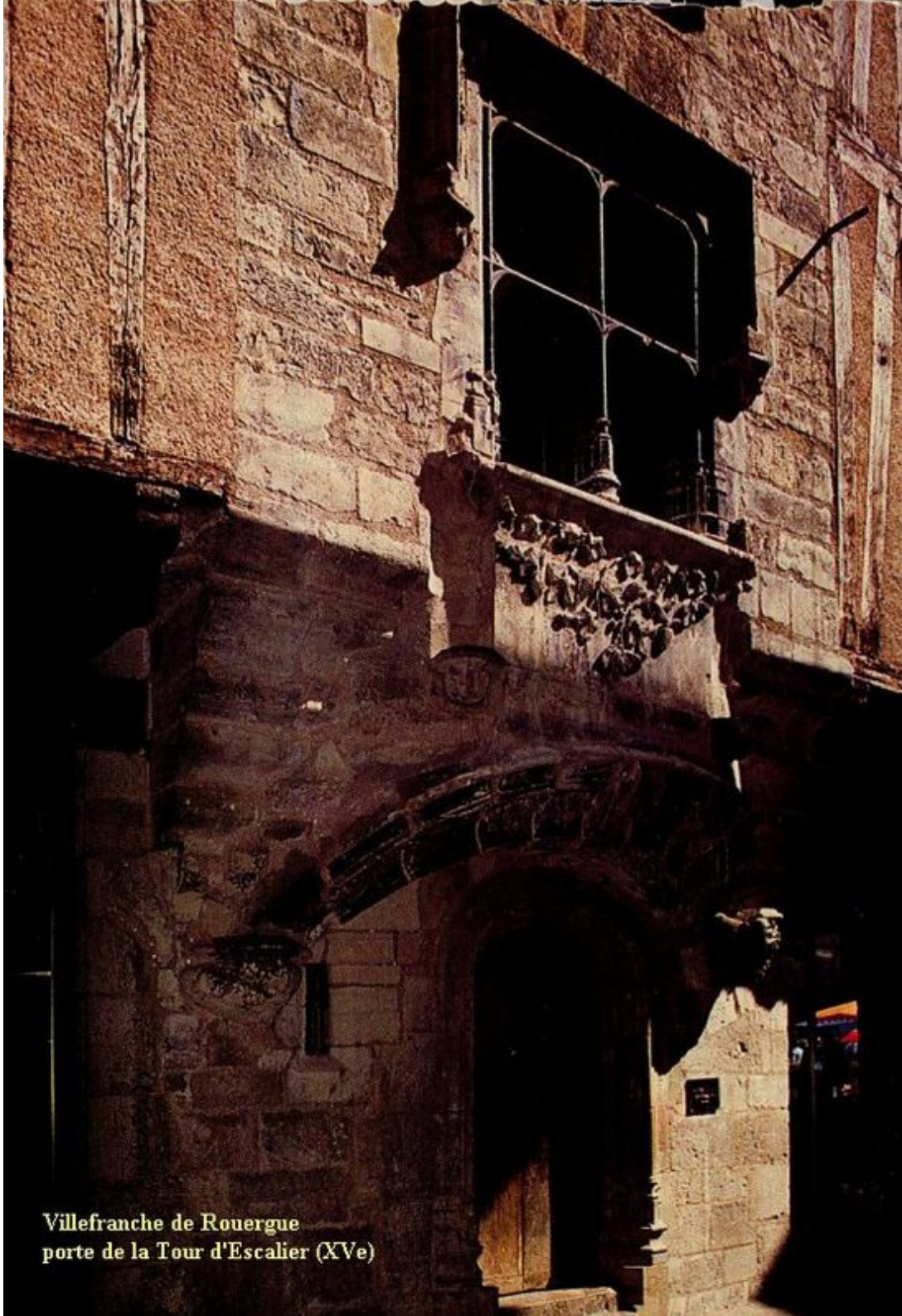


Villefranche de Rouergue



Villefranche de Rouergue - chapelle Sainte Emilie de Rodat





Villefranche de Rouergue
porte de la Tour d'Escalier (XVe)